

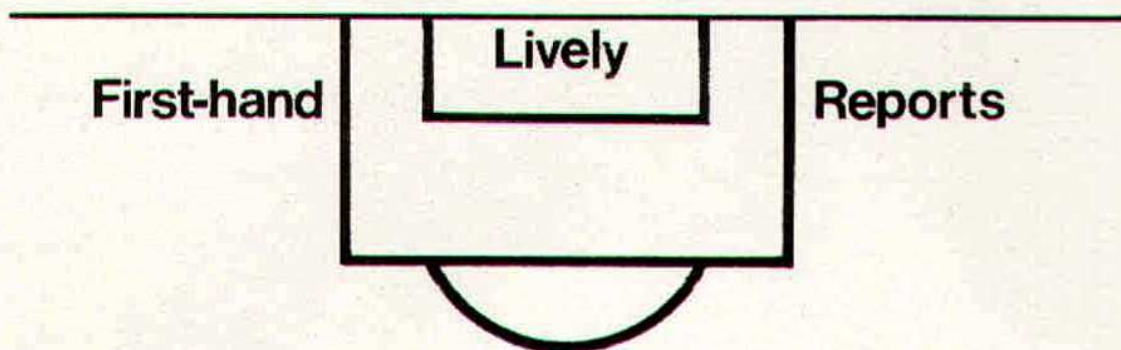
SWINDON TOWN

FOOTBALL CLUB

official programme



1/-



Complete Comprehensive Coverage

Close-up Action Shots Every Game

At home or away

The Evening Advertiser
has it covered

M^cILROYS

the Department Store
with that something extra *Service!*

Free

DELIVERIES
ESTIMATES ON CARPETS & CURTAINS
CARPET FITTING

WILLIAM McILROY (Swindon) LTD.

Tel. 5294



SWINDON TOWN FOOTBALL COMPANY LIMITED

Registered Office: COUNTY GROUND, SWINDON

President: Mr. W. J. CASTLE

Vice-President: Mr. J. DAVIES

Directors:

Chairman: Mr. H. E. LANE

Vice-Chairman: Mr. R. FRICKER

Messrs. F. L. COLLINGS, A. W. DONE, M. EARLE, C. J. GREEN, F. PLYER,
H. WILLIAMS, K. H. WILMER and Dr. J. NICHOLAS

General Manager: Mr. R. A. MORSE

Team Manager: Mr. F. FORD

SATURDAY, 1st NOVEMBER, 1969

Division II

SWINDON TOWN v NORWICH CITY

Kick-off 3 p.m.

SWINDON TOWN	NORWICH CITY	OFFICIALS
1 Downsborough	1 Keelan	REFEREE: Mr. D. C. Fieldsend Sheffield
2 Thomas	2 Stringer	
3 Trollope	3 Black	
4 Butler	4 Mallender	
5 Burrows	5 Forbes	
6 Harland	6 Lucas	
7 Heath	7 Foggo	
8 Horsfield	8 Bryceland	
9 Smart	9 Sylvester	
10 Noble	10 Paddon	LINESMEN:
11 Jones	11 Crickmore	Red Flag: Mr. J. Helps Neath
12 Smith	12 Howard	Yellow Flag: Mr. J. M. Warner Wednesbury
Colours: Red and White	Colours: Yellow and Black	

G. A. Streetly

Tobacconist and Confectioner

**10 BOURNE ROAD
MOREDON SWINDON
Telephone 4956**

C. Goodenough and Sons

Removal and Storage Contractors
any distance

**25 Cricklade Street Swindon
Telephone 4555 and 3855**

CECIL GREEN

Artistic Decorations in all its branches

**12 Armstrong Street
Swindon Wilts
Telephone 4593**

W. J. SELWOOD

Telephone Swindon 5884

Saddlery

General Leather Goods Manufactured and
Repaired to Your Individual Requirements

**103 BROAD STREET
SWINDON WILTSHIRE**

Notton's Cafe

COUNTY ROAD

200 yards from Ground

Perfect meals at all times

For High Class
Central Heating, Plumbing
Painting and Decorating
Electrical Installations
and Repairs

**NORTH WILTS
Sanitary and Heating
Co. Ltd.**

**NEWPORT STREET SWINDON
Telephone 5373/4**



THE ALCOHOL FUEL

COATE GARAGE

REPAIRS - OVERHAULS - WELDING
SERVICING - REBORING - TYRES

Props. E. V. & W. H. Mattick
Marlborough Road Swindon

Leese, Ing & Co. Ltd.

Mineral Water and
Squash Manufacturers

LANSDOWN ROAD SWINDON

Telephone 22744

Maylott Studios

For Group and Sports Photographs

Official Photographer to
Swindon Town Football Club

31 Faringdon Road

Telephone 22792

Always at your service

L. Bibby

For all Types — Rags, Iron and Metal, etc.
Spot Cash Paid. Please Telephone 2101
and our van will call.

**THE PADDOCK ERMIN STREET
STRATTON ST. MARGARET**

news & views

"It's tough at the top" is surely true. Swindon's reputation precedes them and clubs seem to raise their game against us. Such was the case at Portsmouth, where before 18,623 spectators — one of the biggest of the season (containing a goodly percentage of Swindon supporters) — the home team produced form well above their average, and so ensued the best game of the season.

All the critics spoke very highly of the match. A clean, fast, open game, played in a grand sporting spirit. How spectators would enjoy such a game as this each week. Whilst the pundits praised the game, and both teams, unfortunately we gained no points and a set-back in our goal average.

Although being defeated Swindon still retain sixth position in the league table, just two points below top-of-the-table Blackburn Rovers, who have a match in hand. It is an excellent start to the new season in Division 2, but it's going to get very difficult because after today's game we play Birmingham City away, and the following Saturday visit Watford, our partners in promotion, but who have not made a very good beginning.

Today we renew acquaintance with old friends, Norwich City. Like ourselves they spent many seasons in Division 3 from 1946 until they gained promotion to Division 2 in 1959/60 by virtue of finishing in second position. The club promoted with them from top position was Southampton.

We caught up with them in season 1963/64, our first in Division 2. No doubt many of our players and supporters will remember the two games between the clubs on 26th December and 28th December, 1963. The match at Norwich on Boxing Day, played on a mixture of ice, mud and water, was a splendid game. Swindon led by two goals at half-time, but Norwich fought back to level the scores and then scored the winning goal in the last minute. The journey back home was a real nightmare with fog, ice and snow. The return game on Saturday resulted in a draw, two goals each.

By strange coincidence, in the following season we were due to play each other again on the 26th and 28th December, but this time the fixtures were reversed. The home game on Boxing Day was played on a hard, frost-bound, slippery surface. A fine game, with Swindon unlucky losers by a goal scored by Bolland four minutes before the end.

The teams which played on 26th December, 1964, were — Swindon: Hicks; Dawson, Trollope; Morgan, McPherson, Atherton; Shergold, Hunt, Summerbee, Brown, Rogers. Norwich City: Keelan; Kelly, Mullett; Lucas, Butler, Sutton; Heath, Bolland, Davies, Bryceland, Mannion.

It is interesting to note that six of Swindon's players are still in first-class football. Readers will recognise the outside-right of Norwich, and also centre-forward Ron Davies, now of Southampton. At one time Swindon considered signing him from Chester, and also goalkeeper Kevin Keelan, while playing for Wrexham. Remember his fine game at Swindon for that club?

The return game, due to be played at Norwich on 28th December, was postponed, but later played on 30th January, 1965. Result: Norwich 3, Swindon 1.

THE GREAT WESTERN HOTEL

(OPPOSITE SWINDON RAILWAY STATION)

The business man's hotel with a top class
steak bar too!

Specialists in
LUNCHEONS and DINNERS
WEDDING PARTIES and RECEPTIONS
good food — quick service

J. ARKELL and SONS LIMITED Telephone SWINDON 22047

Mills and Merricks Limited

16-17 Bridge Street Swindon

Telephone 5365/6

"HOME OR AWAY"

our function is to ensure that your home is
tastefully and economically furnished

SWINDON'S COMPLETE HOUSE FURNISHERS

New City Office Supplies Limited

Office and Stationery Suppliers
to Industry and Commerce
6 Commercial Road Swindon
Telephone Swindon (STD Code 0793) 4605



CLARK BROS. (Swindon) LTD

Building and Civil Engineering Contractors

CONSULT US FOR
BUILDING AND CIVIL ENGINEERING
CONSTRUCTION IN ALL ITS PHASES

STRATTON ROAD

SWINDON

Telephone Swindon 27261

Supporters' Club Notes

Following on from the last programme, here is the entertainment laid on in the Social Club for the next few weeks:

Saturday, 1st November (Tonight) — The Tempos (always popular — come early).

Sunday, 2nd November — The Cliff Taylor Trio.

Saturday, 8th November — The Country Style (a new up and coming group).

Sunday, 9th November — The Two Clubs.

The new group, The Utopia, which appeared on 19th October, was really something. So much so that they have been engaged for Saturday, 6th December. We were really lucky to get them again so soon — only two cancellations coinciding made this possible.

The Supporters' Club football teams are now in full cry. The last results were — Sunday, 5th October: Social Club 0, Fire Service 0; Coleshill 3, Supporters' Club 2; Westrop 1, West Swindon Thistle 0. Sunday, 12th October: Supporters' Club 2, Blunsdonians 5; Social Club 3, Stratton Utd. 3; Rondor 3, West Swindon Thistle 4. Sunday, 19th October: Social Club 2, Swindon Banks 2; Supporters' Club 6, Deloro Stellite 4; West Swindon Thistle 3, Ferndale 4. Sunday, 26th October: Social Club 8, Smith & Hope 1 (the best ever win); Deers Leap 7, West Swindon Thistle 0 (nine players only was too much of a handicap); Alanbroke 1, Supporters' Club 0 (our goalkeeper unfortunately broke two fingers and his wrist in this game).

Circular letters were sent to everyone who went to Rome on the Supporters' Club Charter flight and included a form of receipt for the £1 refund made to every passenger. It would be greatly appreciated if those who have not yet returned them would do so, as soon as convenient. An addressed envelope was enclosed, so please pop it in the Social Club letter box next time you are at the County Ground.

Congratulations are due to the first team for maintaining close contact at the top of Division 2. Naturally, many supporters thoughts are turning to the possibility of Division 1 next season. A bit early, did some one say? Not to join the Supporters' Club Weekly Competition and help to provide cash for such a contingency. So why not contact one of our Agents — our promoter, Phil Hart, who you will find at the H.Q.'s every Friday evening (6.30 to 7.30 p.m.) and every Saturday afternoon from 1.30 to 3 p.m. will advise you — and, more important, enrol you as an agent.

Face in the crowd — is it you?



In all future editions of this Season's programme we shall publish a photograph of a small section of the crowd at a previous match, one member of which will be clearly indicated by means of a circle. This person will be entitled to a free seat at the next match on producing the programme at the office.

WE AIM TO PLEASE — TRY US

Tunleys

(1)

Glass (2)

Wallpaper (3)

Paint (4)

Polishes (5)

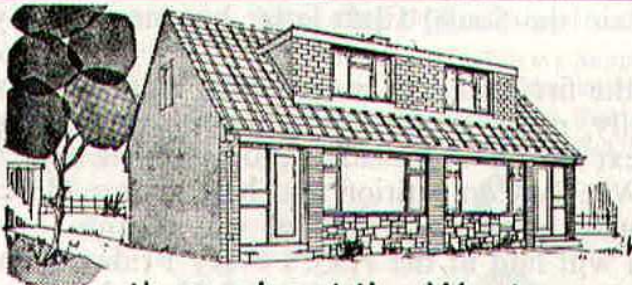
Artist Materials (6)

Prints (7) Ladders (8) Mirrors (9) Brushes (10) Aladdin Heaters (11)

MEMBERS OF THE



12/13 Gloucester Street Swindon Wiltshire



throughout the West

you will find Bradley Estates beautifully situated to meet the requirements of modern living. If you are thinking about a new home and would like to receive full details of our current and planned estates write now to 74 Victoria Road Swindon Wiltshire. Please send me details of

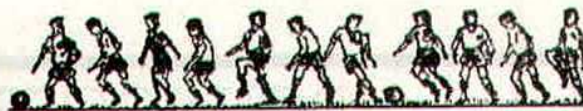
- ☐ Green Meadow Estate, Swindon, Wiltshire
- ☐ Nythe Estate, Swindon, Wiltshire
- ☐ Monkton Park Estate, Chippenham, Wiltshire
- ☐ Park Hill Estate, Frome, Somerset
- ☐ Damory Down Estate, Blandford Forum, Dorset
- ☐ Harkwood Farm Estate, Poole, Dorset
- ☐ Roman Way Estate, Bourton-on-the-Water, Gloucestershire

Name.....

Address.....



BRADLEYESTATES



HISTORY OF NORWICH CITY

The Norwich Football Club was formed in 1905. They moved to the present ground — Carrow Road — in 1935. The capacity of the ground is 48,000 and the record attendance was in 1963 in the 6th round of the Football Association Cup, when 43,984 persons watched the match against Leicester City.

The Club colours are yellow shirts with green collars and cuffs, black shorts and yellow stockings with green hooped tops.

The Club was amongst the original members of the Third Division and first won promotion to the Second Division in 1934. They remained in this Division until 1939, when relegation meant a return to the Third Division. Norwich remained in the Third Division until 1960 and since then have been members of the Second Division.

The Club's best seasons were in 1933-34 when they gained promotion to the Second Division; in 1959 when they were semi-finalists in the Football Association Cup competition and season 1960-61, when they reached their best ever League position, being fourth in the Second Division League table.

Amongst Norwich's outstanding players, mention must be made of Ron Ashman, a stalwart of the Club, who made in all 662 League and Cup appearances; Johnny Gavin, a fine winger, who gained five Eire International caps; Roy Hollis, who developed into a fine centre-forward, and who subsequently was transferred to Tottenham for a substantial fee; and Alf Kirchen, a local player, who developed into a brilliant winger. He was later transferred to Arsenal and became an English International.

PEN PICTURES

TERRY ANDERSON

Born Woking. Previous club, as apprentice and full-time professional, Arsenal (1961-65). Signed for Norwich, February, 1965, at the then club record fee for winger. Former youth international. League and Cup appearances to end of last season 127, goals twelve.

ALBERT BENNETT

Born Durham. Signed February, 1968, from Newcastle United for reported £25,000. Previously with Rotherham, and a former England Under-23 international. Made twelve League appearances last season, scoring once.

ALAN BLACK

Scottish full-back, formerly with Dumbarton. Ex-manager Lol Morgan's first major signing, from Sunderland, September, 1966. League debut at Northampton, 6th September, 1966. League and Cup appearances to end of last season sixty-one.

MAX BRIGGS

Norwich born. Signed as full-time professional in 1967-68 after playing for club as an amateur. Promising young inside-forward or winger. Made League debut last season, when he made nine senior appearances, scoring once.

TOMMY BRYCELAND

Scottish inside-forward signed from St. Mirren in September, 1962, for what was then a record fee for Norwich, a reported £20,000. Recommended by former City Manager, Willie Reid, who had signed him for St. Mirren from Glasgow junior football. League and Cup appearances to end of last season 264, goals fifty-four.

DON ROGERS SPORTS
29 FARINGDON ROAD SWINDON

Telephone 27378

Main suppliers to Swindon Town Football Club

Stockists of

All leading makes of Football Boots and Clothing
Table Tennis, Badminton, Rugby and Hockey equipment

IN FACT THE COMPLETE SPORTS OUTFITTER

RIMES of SWINDON

POPULAR EXCURSION TO

		Fare	
		adult	child
Saturday, 8th November	BIRMINGHAM	Dept. 9.30 a.m.	13/6 9/-
Saturday, 15th November	WATFORD	Dept. 10.00 a.m.	13/- 8/9

SERVICE DIRECT TO THE GROUND
ALL SEATS NUMBERED AND RESERVED

Book now at

102 Commercial Rd., Swindon **46 Cricklade St., Cirencester**
Telephone 27113 Telephone 3479

or with any of Rimes Booking Agents

Dobell Shearman & Co. Ltd.

HIGH STREET SWINDON

Telephone 4961

FANCY and COMMERCIAL STATIONERS
TYPEWRITERS and OFFICE EQUIPMENT

Greetings Cards for all Occasions
from Leading Art Publishers



W. J. CASTLE

Office and Bakery

4 and 5 MARKET STREET
SWINDON

Telephone 22017

Specialists—

BIRTHDAY CAKES - WEDDING CAKES

DAIRY CREAM - PASTRIES

BUNS - ROLLS - SPONGES



OUR VISITORS (continued)

CHARLIE CRICKMORE

When Mike Kenning moved to Wolves in January, 1968, ex-manager Lol Morgan immediately replaced him with Hull-born Crickmore, who was transferred from Rotherham after previous service with Hull, Bournemouth and Gillingham. At end of last season he had made forty-five senior appearances, scoring seven goals.

KEN FOGGO

Scot from Perth. Clever and direct winger who joined the Canaries in October, 1967, from West Bromwich Albion for about £15,000. Soon became firm favourite with Norwich crowd and ended last season as City's Player of the Year. League and Cup appearances sixty-nine, fifteen goals.

DUNCAN FORBES

Born Edinburgh. Signed September, 1968, from Colchester, for whom he had not missed a senior game since 1965. Joined Colchester from Musselburgh. Utility player. Made twenty-three senior appearances last season, with one goal.

TREVOR HOWARD

Born King's Lynn. One of several former apprentices who became full-time professionals in July, 1967. After two brief appearances as substitute, made full first-team debut against Blackpool, 20th April, 1968. League and Cup appearances fourteen, goals two.

KEVIN KEELAN

Calcutta-born goalkeeper who joined Canaries from Wrexham, July, 1963. Previously with Aston Villa, Stockport (on loan) and Kidderminster. Cost only "moderate" fee. Regular first-team keeper for past five seasons. League and Cup appearances to end of last term 203.

MAL LUCAS

Born Wrexham. Signed by Orient, 1958, from Bradley Rangers. Joined City, September, 1964, for big fee plus player-exchange involving Colin Worrell. Welsh international wing-half. League and Cup appearances to end of last season 181, goals nine.

COLIN McDONALD

One of City's squad of up-and-coming youngsters, Norwich-born McDonald joined the Club as an apprentice and signed full-time in July, 1967. League debut, on left-wing, against Blackpool at Carrow Road, 20th April, 1968. Four League appearances.

KEN MALLENDER

Born Thrybergh. Signed October, 1968 (at same time as Geoff Butler), from Sheffield United for club record fee of £40,000. Utility defender who stepped into centre-half berth and made twenty-five League team appearances last season. Cousin of ex-manager Lol Morgan.

NEIL O'DONNELL

Born Glasgow. Scottish youth international who joined Norwich as a sixteen-year-old and signed as full-time professional December, 1966. Inside-forward who made his League debut in 1967-68. League and Cup appearances thirty-two, one goal.

DAVID STRINGER

Born Gorleston. Capped for England Youth as amateur, signed full-time professional forms for Norwich, May, 1963. League debut at Coventry, April, 1965. Regular first-team full-back for past four seasons. League and Cup appearances to end of last season 182.

PETER VASPER

Signed from Guildford City in February, 1968. With Orient as a junior; got first-team chance when Keelan was injured and finished last season with twenty-two League appearances to his credit.

Division I I

Fixture List

1969

August

9 Blackburn Rovers	(A) 0—2
13 Cardiff City	(A) 2—2
16 Carlisle United	(H) 2—2
19 Cardiff City	(H) 2—1
23 Aston Villa	(A) 2—0
30 Charlton Athletic	(H) 5—0

September

2 League Cup (2) Swansea	(A) 3—1
6 Blackpool	(A) 2—3
13 Oxford United	(H) 0—0
16 Middlesbrough	(A) 0—0
20 Queen's Park Rangers	(A) 0—2
24 League Cup (3) Oxford	(A) 0—1
27 Leicester City	(H) 1—1
30 Millwall	(H) 2—1

October

4 Bolton Wanderers	(A) 1—0
7 Carlisle United	(A) 2—2
11 Sheffield United	(H) 2—1
18 Hull City	(H) 1—0
25 Portsmouth	(A) 1—3

November

1 Norwich City	(H)
8 Birmingham City	(A)
15 Watford	(A)
22 Huddersfield Town	(H)
29 Preston North End	(A)

December

6 Bristol City	(H)
13 Oxford United	(A)
20 Blackpool	(H)
26 Aston Villa	(H)
27 Charlton Athletic	(A)

1970

January

3 F.A. Cup (3)	
10 Queen's Park Rangers	(H)
17 Leicester City	(A)
24 F.A. Cup (4)	
31 Bolton Wanderers	(H)

February

7 Sheffield United	(A)
14 Blackburn Rovers	(H)
21 Portsmouth	(H)
28 Hull City	(A)

March

7 Huddersfield Town	(A)
14 Preston North End	(H)
21 Bristol City	(A)
28 Watford	(H)
30 Norwich City	(A)
31 Birmingham City	(H)

April

4 Millwall	(A)
14 Middlesbrough	(H)

Appearances

Name	Div. II	League Cup	F.A. Cup	Cup Winners Cup
Downsborough	17	2		2
Thomas	17	2		2
Trollope	17	2		2
Butler	17	2		2
Burrows	16	2		1
Harland	17	2		2
Smith	10	2		2
Horsfield	16	2		2
Smart	17	2		2
Noble	15	2		2
Rogers	16	2		2
Jones	4 (4)			(1)
Blick	1 (4)			1
Heath	7			
Down	(1)			
Penman		(1)		

(Playing as substitute in brackets)

Goalscorers

Name	Div. II	League Cup	F.A. Cup	Cup Winners Cup
Horsfield	8			3
Noble	6	3		1
Rogers	3			1
Jones	2			
Smith	1			
Burrows	1			
Trollope	1			
Thomas	1			
Smart	1			
Opponents	1			

League Table – Division II

(up to and including Saturday, 25th October, 1969)

	P	W	D	L	F	A	P
Blackburn Rovers	16	9	4	3	22	9	22
Huddersfield Town	16	9	4	3	27	16	22
Queen's Park Rangers	16	9	3	4	32	18	21
Sheffield United	17	9	2	6	31	16	20
Leicester City	16	8	4	4	26	18	20
Swindon Town	17	7	6	4	25	20	20
Carlisle United	16	7	5	4	23	22	19
Blackpool	16	7	4	5	21	24	18
Cardiff City	16	6	5	5	23	17	17
Norwich City	17	7	3	7	15	20	17
Middlesbrough	17	6	4	7	18	22	16
Preston North End	16	4	7	5	13	13	15
Birmingham City	16	5	5	6	17	19	15
Charlton Athletic	17	3	9	5	14	29	15
Bristol City	15	5	4	6	18	15	14
Hull City	17	6	2	9	24	27	14
Oxford United	15	4	6	5	14	16	14
Portsmouth	16	4	5	7	16	29	13
Bolton Wanderers	16	4	4	8	20	24	12
Watford	16	4	3	9	19	22	11
Millwall	16	2	7	7	19	30	11
Aston Villa	16	2	6	8	13	24	10

Last week's matches

Division II

SATURDAY, 25th OCTOBER, 1969

Lost to Portsmouth (away) 3—1.

Team: Downsborough; Thomas, Trollope; Butler, Burrows, Harland; Heath, Smart, Horsfield, Noble, Jones (C).

Attendance 18,623.

Referee: Mr. G. W. Hill (Leicester).

Football Combination

SATURDAY, 25th OCTOBER, 1969

Beat Crystal Palace (home) 1—0.

Team: Jones (R); Allen, Fry; Handrick, Blick, Bailey; Hubbard, Penman, Down, Dangerfield, Claypole.

Attendance: 767.

Referee: Mr. P. J. White (Southampton).

Hellenic League

SATURDAY, 25th OCTOBER, 1969

Lost to Oxford City (away) 2—0.

Team: Grzadowski; Mason, Woodfield; Ackling, Grubb, Aldworth; Stephens, Jellings, Mazurek, Boyd, Bowles.

Forthcoming Matches on This Ground

SATURDAY, 8th NOVEMBER, 1969

Football Combination

SWINDON TOWN v. PLYMOUTH ARGYLE

Kick-off 3 p.m.

SATURDAY, 15th NOVEMBER, 1969

Football Combination Cup

SWINDON TOWN v. CRYSTAL PALACE

Kick-off 3 p.m.

SATURDAY, 22nd NOVEMBER, 1969

Division II

SWINDON TOWN v. HUDDERSFIELD TOWN

Kick-off 3 p.m.

ADVANCE BOOKING

BIRMINGHAM CITY

Stands 12/-

Apply:

Secretary, Birmingham City F.C., St. Andrews, Birmingham 9

Other admission prices not bookable in advance

Stands 15/- Enclosures 8/- Ground 5/- (Boys 2/6)

WATFORD

Stands 12/6 10/- 8/-

Apply:

Secretary, Watford F.C., Vicarage Road Ground, Watford

Ground admission 5/- (Boys 3/-)

The man in the middle

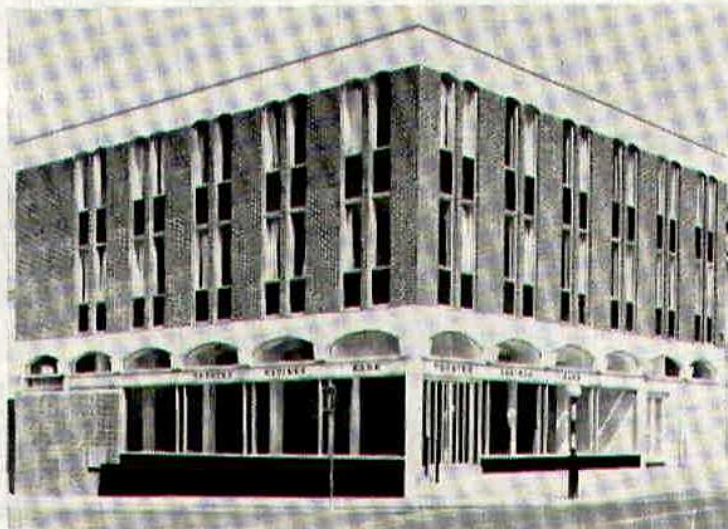


Mr. D. C. Fieldsend

Began refereeing in 1954 with the Sheffield and Hallamshire C.F.A. and later progressed to the Northern Intermediate League then to the Central League. Became a Football League Linesman in 1965, this being his second season as a Football League Referee. Married with a son and daughter and is a pattern maker by trade.

T RUSTEE
S AVINGS
B ANK

93 Commercial Road
Swindon



Facilities include

- CURRENT ACCOUNT SERVICE
- 24 HOUR CASH DISPENSER
- T.S.B. UNIT TRUST
- CONTRACTUAL SAVINGS SCHEME
(giving substantial Tax benefits)

**INTEREST 6½% IN THE
SPECIAL INVESTMENT DEPT.**

Hatton's Newsagency

A. J. D. & N. J. Woodhouse

Newsagents :: Tobacconists
Confectioners

Agents for Wessex School of Motoring
Booking Agents for Rimes Coaches

6 REGENT CIRCUS (near G.P.O.)
Telephone Swindon 22731

BRETTS

PET and GARDEN SUPPLIES

32-33 Commercial Road
and
6 Cromwell Street Swindon

THE PORK SHOP

(Swindon Bacon Curing Co. Ltd.)

Specialists in

Bacon - Pork - Cooked Ham

50 FLEET STREET SWINDON
Telephone 22122

J. WILMER

Coal Merchants

St. Margaret's Road Swindon

Telephone 22535

SOUTHERN LAUNDRY CO. LTD.

Launderers and Dry Cleaners

HAYDON STREET SWINDON
Telephone 4161

At Your Service

A. E. LUDLOW LIMITED

Wholesale Fruit and Potato Merchant

COLBOURNE STREET
SWINDON WILTSHIRE
Telephone Swindon 3583

We deliver Fresh Fruit, Vegetables
and Potatoes daily—Wholesale Only

FOR ALL YOUR ANGLING NEEDS
CONSULT

Frank Woodward

Swindon's Fishing Tackle Specialist

25 HAVELOCK STREET SWINDON
Telephone 3879

For Paints of Good Quality

H. S. Hodges & Sons

(SWINDON) LTD.

Cricklade Road Swindon

Telephone 22422

Dulux, Brolac, Valspar, Wallcharm, etc.

24 hour Delivery
Service -

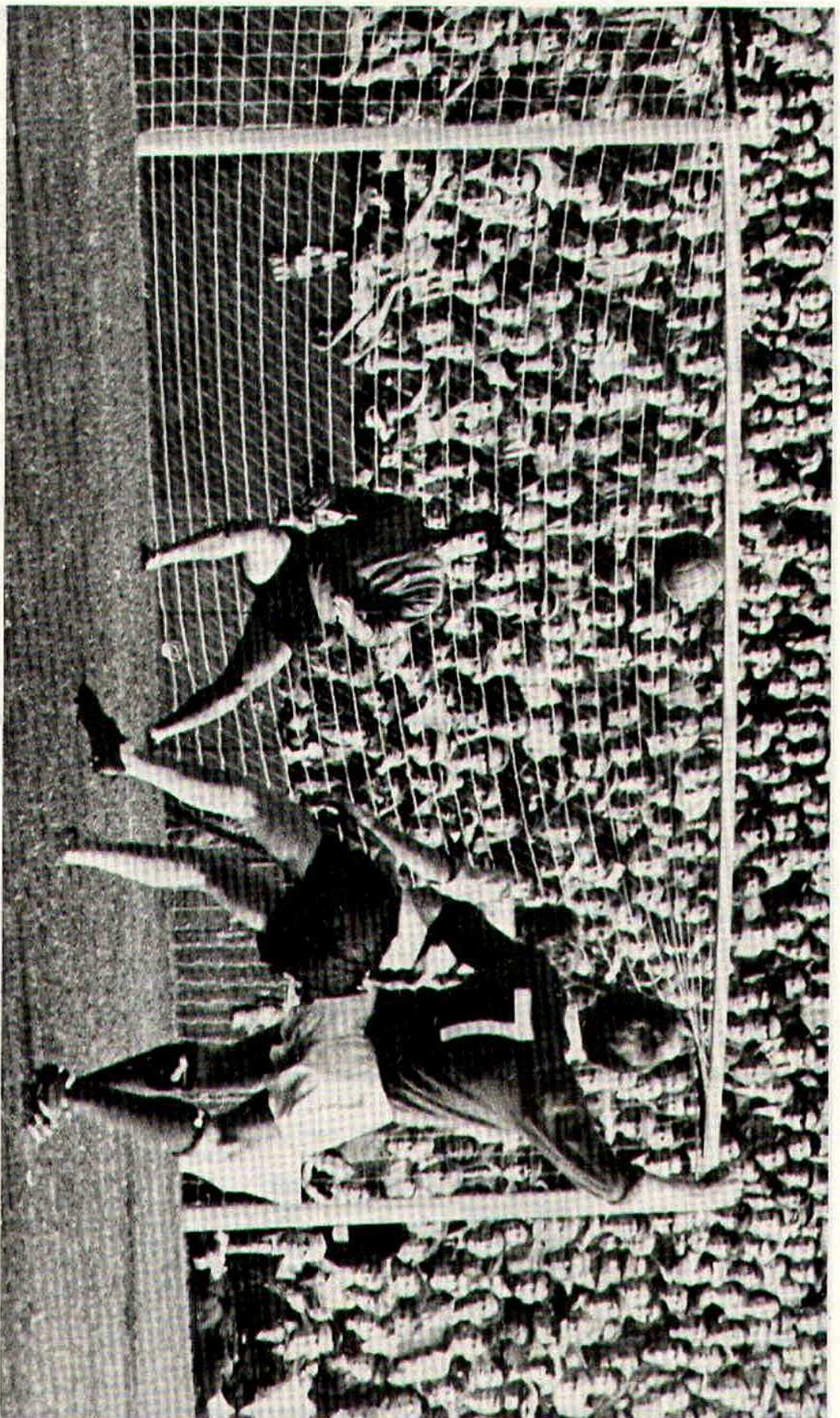
YOUR COMPLETE JANITORIAL SERVICE

Wilts Cleaning Supply Service

Kembrey Warehouse Rear 255 Cricklade Road
SWINDON

Telephone 21012

Represented by G. ALEXANDER
Telephone Swindon 27833



This shot from Don Heath hits the crossbar in the last home game against Hull City.

Ray Marsh

HARRY LUNN

(Ex NOTTS COUNTY, PORTSMOUTH and SWINDON TOWN F.C.)

Fish Bar and Restaurant
27-28 COMMERCIAL ROAD SWINDON

RESTAURANT open 9 a.m. to 10 p.m. for

Snacks - Lunches - High Teas - Evening Meal

FISH BAR open Mid-day and Evenings until 11 p.m.

HULFORD MOTORS LIMITED

SELF DRIVE HIRE

Fleet of 1969/8 Fords Escorts De-Luxe
Cortinas De-Luxe Cortinas 1600 Estate
(Bench Seat Column Change) — Zephyr V4s

SHRIVENHAM ROAD

(200 yards from Football Ground)

Telephone 4934

Large Car Park Available

COWLEY BROS. (Wroughton) LTD.

BUILDERS OF MODERN ATTRACTIVE
HOUSES and BUNGALOWS

Developments at

SWINDON

WROUGHTON

BADBURY

Office

28 NEWPORT STREET
SWINDON

Telephone Swindon 6870

Reserved for British Rail



Inter-City

Key of the Board

First section

A—Burnley v. Newcastle United
 B—Chelsea v. Coventry City
 C—Crystal Palace v. Arsenal
 D—Derby County v. Liverpool
 E—Everton v. Nottingham Forest
 F—Ipswich Town v. Manchester City
 G—Manchester United v. Stoke City
 H—Southampton v. West Ham United
 I—Sunderland v. Leeds United
 J—Tottenham Hotspur v. Sheffield Wed.
 K—Wolverhampton Wanderers v. Albion
 L—Aston Villa v. Queen's Park Rangers
 M—Bolton Wanderers v. Bristol City
 N—Cardiff City v. Hull City
 O—Carlisle United v. Portsmouth
 P—Charlton Athletic v. Blackpool
 Q—Huddersfield Town v. Millwall
 R—Leicester City v. Oxford United
 S—Preston North End v. Middlesbrough
 T—Sheffield United v. Blackburn Rovers

Second section

A—Watford v. Birmingham City
 B—Bradford City v. Gillingham
 C—Brighton & H.A. v. Fulham
 D—Bristol Rovers v. Shrewsbury Town
 E—Mansfield Town v. Tranmere Rovers
 F—Orient v. Bournemouth & B.A.
 G—Rochdale v. Reading
 H—Rotherham United v. Luton Town
 I—Stockport County v. Bury
 J—Torquay United v. Southport
 K—Aldershot v. Colchester United
 L—Crewe Alexandra v. Scunthorpe Utd.
 M—Grimsby Town v. Oldham Athletic
 N—Hartlepool United v. Wrexham
 O—Lincoln City v. Workington
 P—Notts County v. Swansea Town
 Q—Southend United v. Chesterfield
 R—York City v. Northampton Town



Going by Car?

BIRMINGHAM CITY

Saturday, 8th November, 1969

SWINDON to BIRMINGHAM . . .

Leave by Cricklade Road A345 to **Cricklade** and **Cirencester**.

15½ miles

Take A417 out of Cirencester then A435 via Baunton and Seven Springs to **Cheltenham**.

31½ miles

Leave by A4019 and A38 to Tewkesbury, keep left to the **M50 Motorway**.

40 miles

Follow signs "Birmingham M50" at 1½ miles on join M5, continue on until the Intersection (3) and take the Birmingham West **A456 road**.

70¾ miles

Follow signs "North West M6, Birmingham (West) A456" along Halesowen by-pass, at the end of which cross Ring Road into Hagley Road then via Lee Bank Road and Belgrave Road turn left into Moseley Road and continue to Emmeline Street, **Birmingham**.

82¾ miles

WATFORD

Saturday, 15th November, 1969

SWINDON to WATFORD . . .

Leave by A345 to Common Head then take A419 via Aldbourne to junction with A4, turn left to **Hungerford**.

16¼ miles

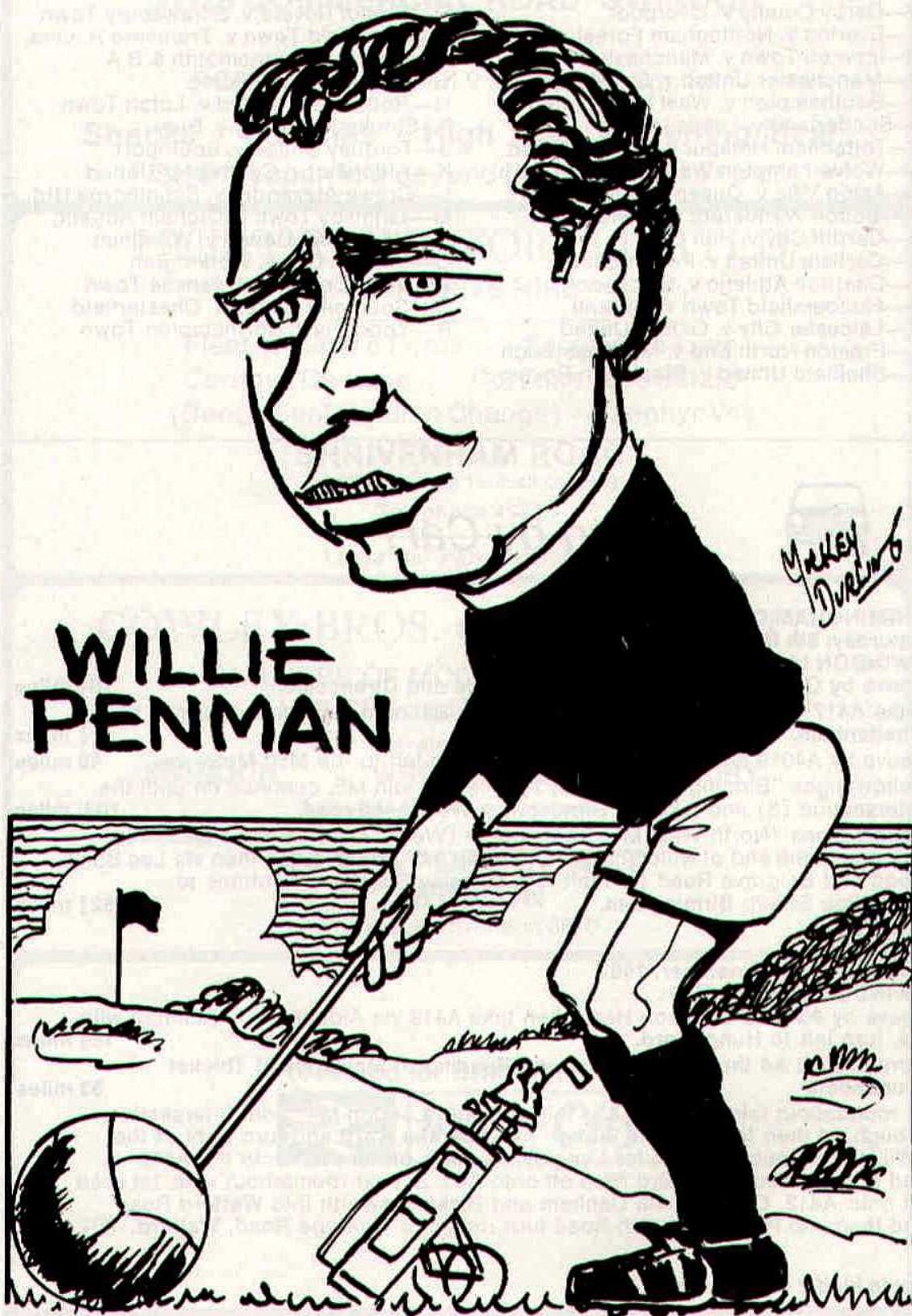
Continue on A4 through Newbury and Reading to **Maidenhead Thicket roundabout**

53 miles

At roundabout take M4 road and follow signs "London M4" until Intersection, Slough A4 then follow signs Slough A4. Take the B470 and turn right at the "William IV" public house for Langley, 1½ miles on turn left onto the A412 and at roundabout take 3rd road off onto A40; at next roundabout take 1st road off onto A412. Continue via Denham and Rickmansworth into Watford Road and then into Rickmansworth Road turn right into Vicarage Road, **Watford**. 80½ miles

Route kindly supplied by R.A.C.

WILLIE PENMAN



Suppliers to the Swindon Team
MAY WE SUPPLY YOU?



EARLE

of Chippenham Limited

MAIN

FORD

DEALERS

COCKLEBURY ROAD CHIPPENHAM

Telephone 3255

H. HIBBERD LIMITED

FOR YOUR EARTH-MOVING EQUIPMENT

Plant Hire Contractors



40 NEWPORT STREET SWINDON

Telephone Swindon 6125

Football Combination

Fixture List

1969

August

9	Southampton	(H)	2—2
16	Swansea Town	(A)	0—1
23	Queen's Park Rangers	(H)	1—4

September

4	Oxford United	(A)	2—0
6	Bristol City	(H)	1—2
17	Cardiff City	(A)	3—2
20	Arsenal	(H)	1—2
27	Luton Town	(A)	0—2

October

4	Reading	(H)	1—2
7	Bristol Rovers	(A)	P
11	Ipswich Town	(A)	1—0
21	Bristol City	(A)	2—7
25	Crystal Palace	(H)	1—0

November

8	Plymouth Argyle	(H)
15	Crystal Palace	(H)
22	Swansea Town	(A)
29	Tottenham Hotspur	(H)

December

8	Peterborough United	(A)
13	Leicester City	(H)
17	Plymouth Argyle	(A)
20	West Ham United	(A)
27	Swansea Town	(H)

1970

January

17	Gillingham	(A)
20	Cardiff City	(H)
24	Chelsea	(H)
27	Arsenal	(A)

February

3	Arsenal	(H)
7	Fulham	(H)
10	Bristol Rovers	(H)
17	Walsall	(A)
24	Northampton	(A)

March

7	Birmingham City	(H)
11	Crystal Palace	(A)
18	Norwich City	(A)
21	Bristol Rovers	(A)

April

4	Bournemouth & B.A.	(H)
---	--------------------	-----	-------



Dawson



Jones (C)

Appearances		Goalscorers	
Foot.	Foot.	Foot.	Foot.
Comb.	Comb.	Comb.	Comb.
Cup	Cup	Cup	Cup
Name			
Price	1		
Dawson	5		
Fry	9	1	
Desmeules	7		
Blick	11	1	
Handrick	11	1	1
Heath	4		
Penman	7		
Down	11	1	6
Dangerfield	11		6
Moss	3	1	
Bailey	6 (2)	1	
Grzadowski	2		
Hubbard	10	1	
Jones (R)	8	1	
Allen	6	1	
Jones (C)	1		
Wetson	1	1	1
Claypole	7	1	

(Playing as substitute in brackets)

AKERS GARAGE LIMITED

THE STREET MOREDON SWINDON WILTSHIRE

Telephone Swindon 3457/8

main dealer for
VAUXHALL/BEDFORD
and
Parts and Accessories
Sales and Service

Showrooms open
MONDAY to FRIDAY — 8 a.m. to 8 p.m.
SATURDAY — Closed 7 p.m.
SUNDAYS — 10 a.m. to 2 p.m. for Petrol and Viewing



MODERN LIVING IN EXPERIENCED HANDS

Wilson homes are the result of over 60 years experience in house building. The Company Architect and his design team are always researching into the ever changing requirements of home buyers, to give them better designed homes, which are easy to run, easy to maintain and comfortable to live in.



All our houses and bungalows are built to the stringent specification of the National House Builders Registration Council who will guarantee your home for 10 years.

Visit a Wilson Show Home and you will see for yourself why Wilson's have such a reputation in giving value for money.

WILSON

(Swindon) LTD., 90-92 Commercial Road, Swindon Telephone 6361 (3 lines)

seating manufacturers for Stadium Seats Ltd

- * Heavy, medium and light steel fabrication
- * Custom made production line equipment
- * Ancillary work for industry and the building trade

FAST EFFICIENT SERVICE BY



MARTYN LYN SHAW LTD

BOUNDARY WORKS - STRATTON ROAD - SWINDON - WILTS

Telephone 21844

spectator seating in high density polyethylene

- * Supplied to over 36 Football League clubs
- * Any colour. No maintenance
- * Industrial seats for the food, electronics and pharmaceutical industries
- * Largest supplier of spectator and industrial seating in Europe

STADIUM SEATS LTD

STRATTON ROAD - SWINDON - WILTS Telephone 21844